



ACE INDUSTRIES
CRANE & HOIST

Lifting Equipment Inspection Report

Collins Reseach Hall

Periodic Inspection

Collins Research Lab

Collins Research Lab

Collins Research Lab



Inspection Date:

4/6/2022

InspectionID:

042058163

Prepared For:

Powell Barber (FL) -
Operations

2707 US Hwy 84 Bypass | Thomasville, GA 31792

Toll: 800-733-2231 | Tel: 800-733-2231

Fax: | 229-228-1806

aceindustries.com

Prepared By:

Inspection Team JN



MHI

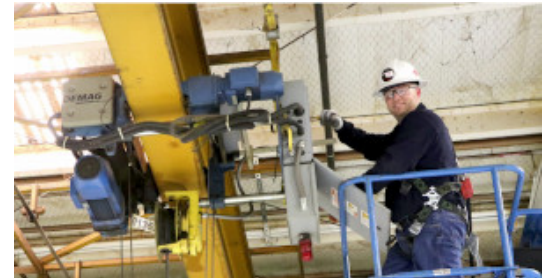


CMAA[®]
CRANE MANUFACTURERS
ASSOCIATION OF AMERICA, INC.
Member Company

Introduction

Inspections in Perspective

The combination of timely inspections and a thorough preventative maintenance program are not only required by law but are also essential to the safe, efficient, and cost-effective operation of overhead lifting equipment. Ace Industries' Certified Crane Care Inspection Program is specifically designed to provide inspections and preventative maintenance guidelines in accordance with all appropriate governing bodies, safety codes, manufacturer's guidelines, and industry best practices surrounding overhead lifting equipment.



Ace's Certified Crane Care Inspection Program rigorously follows the guidelines for the construction, maintenance, inspection, and operation of Overhead and Gantry Cranes required by OSHA and ANSI. OSHA regulations define the requirement for frequent operational inspections and documented, periodic inspections for Overhead Bridge, Monorails, and Gantry Cranes. All Ace inspectors are highly trained in the interpretation and application of Occupational Health and Safety Administration (OSHA) Code of Federal Regulations 1910.179, American National Standards Institute (ANSI) part B30, and the Crane Manufacturer's Association of America (CMAA) Specification 78.

Company At-a-Glance

Ace Industries, Inc., founded in 1932, is one of the largest overhead crane and hoist distribution, manufacturing, and service companies in the United States. Ace has fully stocked warehouses, service centers, and sales offices in Atlanta, Georgia; Birmingham, Alabama; Decatur, Alabama; Charlotte, NC; Cincinnati, Ohio; Columbus, Ohio; Nashville, Tennessee; Chattanooga, Tennessee; and Knoxville, Tennessee. Ace associates number over 180 and have a strong determination to serve our customers faithfully and knowledgeably.

Parts & New Units:

We specialize in the distribution of electric chain hoists, wire rope hoists, hand chain hoists, trolleys, crane components, replacement parts, and accessories. Complete inventories of these products are stocked in regional facilities located throughout the United States. Our distribution abilities are noted for having parts and new units available for same day shipment. For stocked products, ask us about our best price guarantee.

Manufacturing & Engineering:

The design, manufacturing and distribution of overhead bridge cranes, gantry cranes, jib cranes, work station cranes and runway systems are handled in-house by our employees. A qualified and experienced engineering staff with specialists in structural, mechanical and electrical engineering insure we exceed our customers' expectations. Multiple manufacturing facilities provide the ability and scheduling flexibility to meet the delivery dates of our customers.

Services & Inspections:

Field service operations utilize the Certified Crane Care inspection program developed by Ace Industries Inc. The Certified Crane Care inspection program provides our technicians the ability to perform a thorough and standardized equipment inspection. Customers benefit by receiving a detailed equipment inspection, with fast turnaround time on inspection reports and transparent repair quotations.

Slings & Rigging:

Lifting and rigging equipment is available through multiple rigging division locations. We distribute the Stren-Flex® brand sling, which are the highest quality domestic synthetic web slings. Synthetic web slings are customizable with multiple options to fit your needs. We also inventory a large selection of "in stock" chain, wire rope, sling and rigging products.

- Introduction -

Certified Crane Care Inspection Program

Ace Industries, Inc. is unwavering in its commitment to providing the most effective, highest quality, and most valuable services for our customers. Ace’s uncompromising pursuit of excellence is encompassed in the four primary goals of Ace’s Certified Crane Care Inspection Program.



- Safety
- Industry Best Practices
- Preventative Maintenance
- Compliance – OSHA & ANSI Regulations

Ace engineered each component of the Certified Crane Care Inspection Program to fuse the elements of safety, industry best practice, preventative maintenance, and compliance into one program. Every aspect of Ace’s 250+ point inspection provides appropriate and rapid feedback to our customers. For more information about the goals of Ace’s Certified Crane Care Inspection Program, see the following detailed explanations of Ace’s commitment to its inspection goals.



Safety

Safety is the primary goal of Ace’s inspection program. At Ace, safety begins with every inspector, which follows Ace’s commitment to a safe working environment for all our associates. Ace inspectors are trained to identify safety hazards and bring any danger or serious risk to the attention of our customers immediately.

Best Practices

As an industry leader in the overhead material handling industry for over 85 years, Ace provides years of expertise, resources, and equipment to all Ace associates to benefit our customers and vendors. Ace maintains a rigorous training and certification program to ensure that all Ace inspectors understand industry best practices that go beyond mere compliance for construction, maintenance and operation of overhead material handling equipment. Ace’s training is designed to leverage our years of knowledge and expertise to provide the greatest value for our customers.

Preventative Maintenance

Ace’s 250+ point inspection reports are designed to provide a rapid, easy-to-read format for our customers to address preventative maintenance and repair efforts. Ace inspectors understand that preventative maintenance is a key component to any effective inspection program, and our inspectors are trained to make our customers aware of any problems or defects in equipment so our customers may turn maintenance efforts towards enhancements and corrective actions which are vital to the safety and success of their company.

Compliance

The inspection program is designed to ensure our customers’ lifting equipment conforms to applicable OSHA, ANSI and CMAA regulations regarding safety, construction, and reliability for overhead lifting equipment. Inspectors are trained in the interpretation, application, and understanding of OSHA, ANSI, and CMAA codes. The program is designed to ensure that our customers have the proper documentation for maintenance and inspections as required by law. The inspection history information is stored in a database and can be accessed whenever needed.

- Introduction -

Conventions Found in this Report

All inspections were based on visual and operational observations at the time of inspection and do not guarantee the reliability or safety of the equipment noted.

The following conventions have been used in this report:

Conditions

Good: condition of an item, component, or piece of equipment that requires no special attention at this time.

Fair: condition of an item, component, or piece of equipment that could possibly cause a breakdown, malfunction, or unsafe condition before the next scheduled periodic inspection.

Poor: condition of an item, component, or piece of equipment that will likely cause a breakdown, malfunction, or unsafe condition before the next scheduled periodic inspection.

Unsatisfactory: condition of an item, component, or piece of equipment that should be repaired as soon as possible as it is in violation of OSHA or ANSI standards as they pertain to overhead cranes and hoists or is an immediate danger or safety concern.



Actions Required

Disassembly Required: condition of an item, component, or piece of equipment that requires disassembly for further evaluation. By marking items with Disassembly Required, Ace recommends planned maintenance unless otherwise noted.

Preventative Maintenance: indicates that preventative maintenance should be performed to the flagged issue marked to prevent a more serious problem.

Corrective Action Made: action was taken during the time of inspection to correct, repair, or modify an existing problem, malfunction, or unsafe condition before the inspection was completed. By marking items with Corrective Action Taken, Ace inspectors denote specific actions taken during the time of inspection and note requirements for future repairs, modifications, or monitoring required if applicable.

Testing Required: indicates further testing required to evaluate the working condition of the item being inspected.

Please note that these designations are assigned based on visual observations only at the time of the inspection. All inspections are made visually and without disassembling components to check for concealed defects (unless otherwise noted). No load tests or magnaflux tests have been made unless specifically noted.

Equipment Summary

Unit #1

Equipment ID: LINAC Hall
 Description: 4 Ton Ursg With Aux. Girder By Vulcan Crane
 Location: Collins Research Lab - Collins Reseach Hall (27367)
 Summary: Annual Inspection by Kipp (Jordan) Carter on 4/6/2022
 Conditions: 116 **G**

Signature



Component	Type	Manufacturer	Model #	Serial #	Capacity
Runway	Under-Running	--	--	--	--
Bridge	Under Running Single Girder	Vulcan Crane	--	587	4 TON
Hoist	Electric	Chester	ELM-0400S	ELM-3892	4 TON
Trolley	Electric	Chester	ELM-0400S	ELM-3892	4
Pendant / Remote	Pendant PB	Telemecanique	XAC-A04H7	NA	--
Pendant / Remote	Remote	Alpha (Fomotech)	ALPHA 600	08022308	--

Inspection Observations

G = Good
F = Fair
P = Poor
U = Unsatisfactory
N = Not Applicable
I = Incomplete

Runway - Under Running 80' Structural

- G Runway Structure
- G Rail / Bar
- G Electrification / Power

Bridge - Vulcan Crane 4 Ton

- G Markings & Warnings
- G Structure
- G End Trucks
- G Bridge Drivetrain
- G Electrification / Power
- G Warning Devices

Hoist - Chester Worm Drive ELM Series

- G Markings & Warnings
- G Lifting Medium
- G Suspension / Lower Block
- G Electrification / Power
- G Mechanical Components
- G Safety Cables

Trolley - Chester Package

- G Markings & Warnings
- G Trolley Frame
- G Mechanical Components
- G Electrification / Power
- G Safety Cables

Pendant / Remote - Schneider/telemecanique Xac Series

- G PB / Remote (3+ Buttons)

Pendant / Remote - Alpha Radio

- G PB / Remote (3+ Buttons)

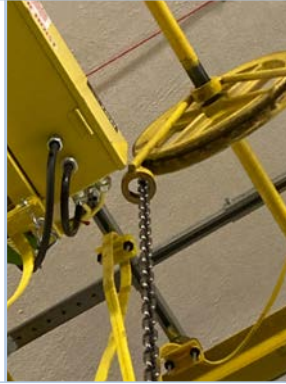
Please note that these designations are assigned based on visual observations only at the time of the inspection. All inspections are made visually and without disassembling components to check for concealed defects (unless otherwise noted). No load tests or magnaflux tests have been made unless specifically noted.

Bridge - Vulcan Crane 4 Ton

Point: 8 - Trolley Stop

Condition: G

Comments: Trolley hits bridge hand chain guide and wheel. Need to relocate south trolley stop.



Equipment Summary

Unit #4

Equipment ID: Target Room 2 South
 Description: 2 Ton Bridge Crane
 Location: Collins Research Lab - Collins Reseach Hall (27367)
 Summary: Annual Inspection by Kipp (Jordan) Carter on 4/6/2022
 Conditions: 82 **G**

Signature



Component	Type	Manufacturer	Model #	Serial #	Capacity
Runway	Under-Running	--	--	--	--
Bridge	Under Running Double Girder	Gorbel	--	614650	2 TON
Hoist	Electric	Coffing	JLC4008	JMB1247YV	2 TON
Trolley	Push	Gorbel	--	613650	2 TON

Inspection Observations

G = Good
F = Fair
P = Poor
U = Unsatisfactory
N = Not Applicable
I = Incomplete

Bridge - 2 Ton Urdg Bridge Crane

- G Markings & Warnings
- G Structure
- G End Trucks
- G Electrification / Power
- G Warning Devices
- G Safety Cables

Runway - 2 Ton

- G Runway Structure
- G Rail / Bar
- G Electrification / Power

Hoist - 2 Ton Electric Chain Hoist

- G Markings & Warnings
- G Lifting Medium
- G Suspension / Lower Block
- G Electrification / Power
- G Mechanical Components
- G Push Button (2 btn only)
- G Safety Cables

Trolley - 2 Ton Urdg Push

- G Markings & Warnings
- G Trolley Frame
- G Mechanical Components
- G Safety Cables

Please note that these designations are assigned based on visual observations only at the time of the inspection. All inspections are made visually and without disassembling components to check for concealed defects (unless otherwise noted). No load tests or magnaflux tests have been made unless specifically noted.

Equipment Summary

Unit #5

Equipment ID: Target Room 2 North
 Description: 2 Ton Bridge Crane
 Location: Collins Research Lab - Collins Research Hall (27367)
 Summary: Annual Inspection by Kipp (Jordan) Carter on 4/6/2022
 Conditions: 81 **G**

Signature



Component	Type	Manufacturer	Model #	Serial #	Capacity
Runway	Under-Running	--	--	--	--
Bridge	Under Running Double Girder	Gorbel	--	614550	2 TON
Hoist	Electric	Coffing	JLC4008	JMB1246YV	2 TON
Trolley	Push	Gorbel	614550	614550	2 TON

Inspection Observations

G = Good
F = Fair
P = Poor
U = Unsatisfactory
N = Not Applicable
I = Incomplete

Runway - 2 Ton Urdg

- G Runway Structure
- G Rail / Bar
- G Electrification / Power

Bridge - 2 Ton Urdg

- G Markings & Warnings
- G Structure
- G End Trucks
- G Electrification / Power
- G Warning Devices
- G Safety Cables

Hoist - 2 Ton Elect Chain Hoist

- G Markings & Warnings
- G Lifting Medium
- G Suspension / Lower Block
- G Electrification / Power
- G Mechanical Components
- G Push Button (2 btn only)
- G Safety Cables

Trolley - 2 Ton Urdg Push

- G Markings & Warnings
- G Trolley Frame
- G Mechanical Components
- G Safety Cables

Please note that these designations are assigned based on visual observations only at the time of the inspection. All inspections are made visually and without disassembling components to check for concealed defects (unless otherwise noted). No load tests or magnaflux tests have been made unless specifically noted.

Equipment Summary

Unit #3

Equipment ID: Target Room 1
 Description: 8000lb Hoist And Trolley
 Location: Collins Research Lab - Collins Research Hall (27367)
 Summary: Annual Inspection by Kipp (Jordan) Carter on 4/6/2022
 Conditions: 2 **U** 88 **G**

Signature



Component	Type	Manufacturer	Model #	Serial #	Capacity
Runway	Top-Running	--	--	--	--
Bridge	Top Running Double Girder	NA	--	UNKNOWN	4 Ton
Hoist	Electric	P&H	HEVI-LIFT	R-21916	4 Ton
Trolley	Hand Geared	NA	--	--	4 Ton

Inspection Observations

G = Good
F = Fair
P = Poor
U = Unsatisfactory
 N = Not Applicable I = Incomplete

Runway - Runway

- G Runway Structure
- G Rail / Bar
- G Electrification / Power

Bridge - Budow 8000lb Capacity

- G Markings & Warnings
- U Structure

(U) 11: Clearances - Approximately 1-1/2" clearance over hoist. Broken parts hanging down out of old lights. Need to remove old unused light fixtures. OSHA - 1910.179 (b) (6) (i) Minimum clearance of 3 in. Yoverhead and 2 in. laterally shall be provided and maintained between crane obstructions in conformity with CMAA # 61 (2 Pictures) Repaired: __/__/__ By: _____

- G End Trucks
- G Bridge Drivetrain
- G Electrification / Power
- G Warning Devices
- G Safety Cables

Hoist - P&H

- G Markings & Warnings
- G Lifting Medium
- U Suspension / Lower Block
- G Electrification / Power
- G Mechanical Components
- G Push Button (2 btn only)
- G Safety Cables

(U) 25: Lower Safety Latch - No safety latch is installed, universal latch is needed. (2 Pictures) Repaired: __/__/__ By: _____

Trolley - Budow Trolley

- G Markings & Warnings
- G Trolley Frame
- G Mechanical Components
- G Safety Cables

Please note that these designations are assigned based on visual observations only at the time of the inspection. All inspections are made visually and without disassembling components to check for concealed defects (unless otherwise noted). No load tests or magnaflux tests have been made unless specifically noted.

Bridge - Budow 8000lb Capacity

Point: 11 - Clearances

Condition: U

Comments: Approximately 1-1/2" clearance over hoist. Broken parts hanging down out of old lights. Need to remove old unused light fixtures. OSHA - 1910.179 (b) (6) (i)
Minimum clearance of 3 in. Yoverhead and 2 in. laterally shall be provided and maintained between crane obstructions in conformity with CMAA # 61



Point: 11 - Clearances

Condition: U

Comments: Approximately 1-1/2" clearance over hoist. Broken parts hanging down out of old lights. Need to remove old unused light fixtures. OSHA - 1910.179 (b) (6) (i)
Minimum clearance of 3 in. Yoverhead and 2 in. laterally shall be provided and maintained between crane obstructions in conformity with CMAA # 61



Hoist - P&H

Point: 25 - Lower Safety Latch

Condition: U

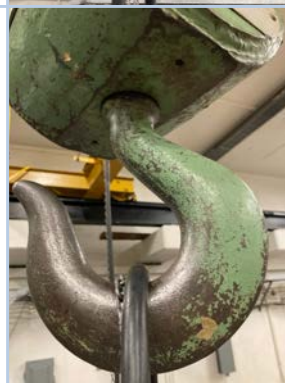
Comments: No safety latch is installed, universal latch is needed.



Point: 25 - Lower Safety Latch


Condition: U

Comments: No safety latch is installed, universal latch is needed.



Equipment Summary Unit #2

Equipment ID: Tandem Vault
 Description: 2 Ton TRSG Hand Geared Crane
 Location: Collins Research Lab - Collins Research Hall (27367)
 Summary: Annual Inspection by Kipp (Jordan) Carter on 4/6/2022
 Conditions: 1 **U** 122 **G**

Signature


Component	Type	Manufacturer	Model #	Serial #	Capacity
Runway	Top-Running	--	--	--	--
Bridge	Top Running Single Girder	Unknown	--	UNKNOWN	2 Ton
Hoist	Hand Chain	Harrington	CF4-0321	C038478	2 Ton
Hoist	Electric	P&H	HEVI-LIFT	RA56069	2 Ton
Trolley	Push	Budgit	--	M-5129	2 Ton
Trolley	Hand Geared	P&H	--	RA56069	2 Ton

Inspection Observations

G = Good **F = Fair** **P = Poor** **U = Unsatisfactory** **N = Not Applicable** **I = Incomplete**

Runway - Runway

- G** Runway Structure
- G** Rail / Bar
- G** Electrification / Power

Bridge - Bridge

- G** Markings & Warnings
- G** Structure
- G** End Trucks
- G** Bridge Drivetrain
- G** Electrification / Power
- G** Warning Devices
- G** Safety Cables

Trolley - Budgit 2 Trolley

- G** Markings & Warnings
- G** Trolley Frame
- G** Mechanical Components
- G** Safety Cables

Hoist - Harrington 2 Ton Chain Hoist

- G** Markings & Warnings
- G** Lifting Medium
- G** Suspension / Lower Block
- G** Mechanical Components
- G** Push Button (2 btn only)
- G** Safety Cables

Hoist - P&H 2 Ton

- G** Markings & Warnings
- G** Lifting Medium
- U** Suspension / Lower Block
 (U) 25: Lower Safety Latch - Missing safety latch requires installation. (1 Picture)
- G** Electrification / Power
- G** Mechanical Components

Repaired: __/__/__ By: _____

- G** Push Button (2 btn only)
- G** Safety Cables

Trolley - P&H Trolley

- G** Markings & Warnings
- G** Trolley Frame
- G** Mechanical Components
- G** Safety Cables

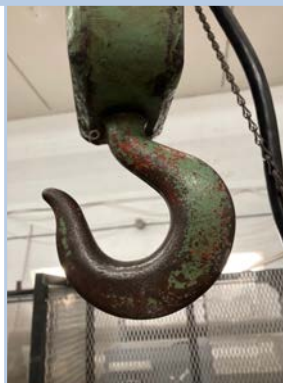
Please note that these designations are assigned based on visual observations only at the time of the inspection. All inspections are made visually and without disassembling components to check for concealed defects (unless otherwise noted). No load tests or magnaflux tests have been made unless specifically noted.

Hoist - P&H 2 Ton

Point: 25 - Lower Safety Latch

Condition: U

Comments: Missing safety latch requires installation.



Trolley - P&H Trolley

Point: 1 - Adjustment to Beam

Condition: G

Comments:

